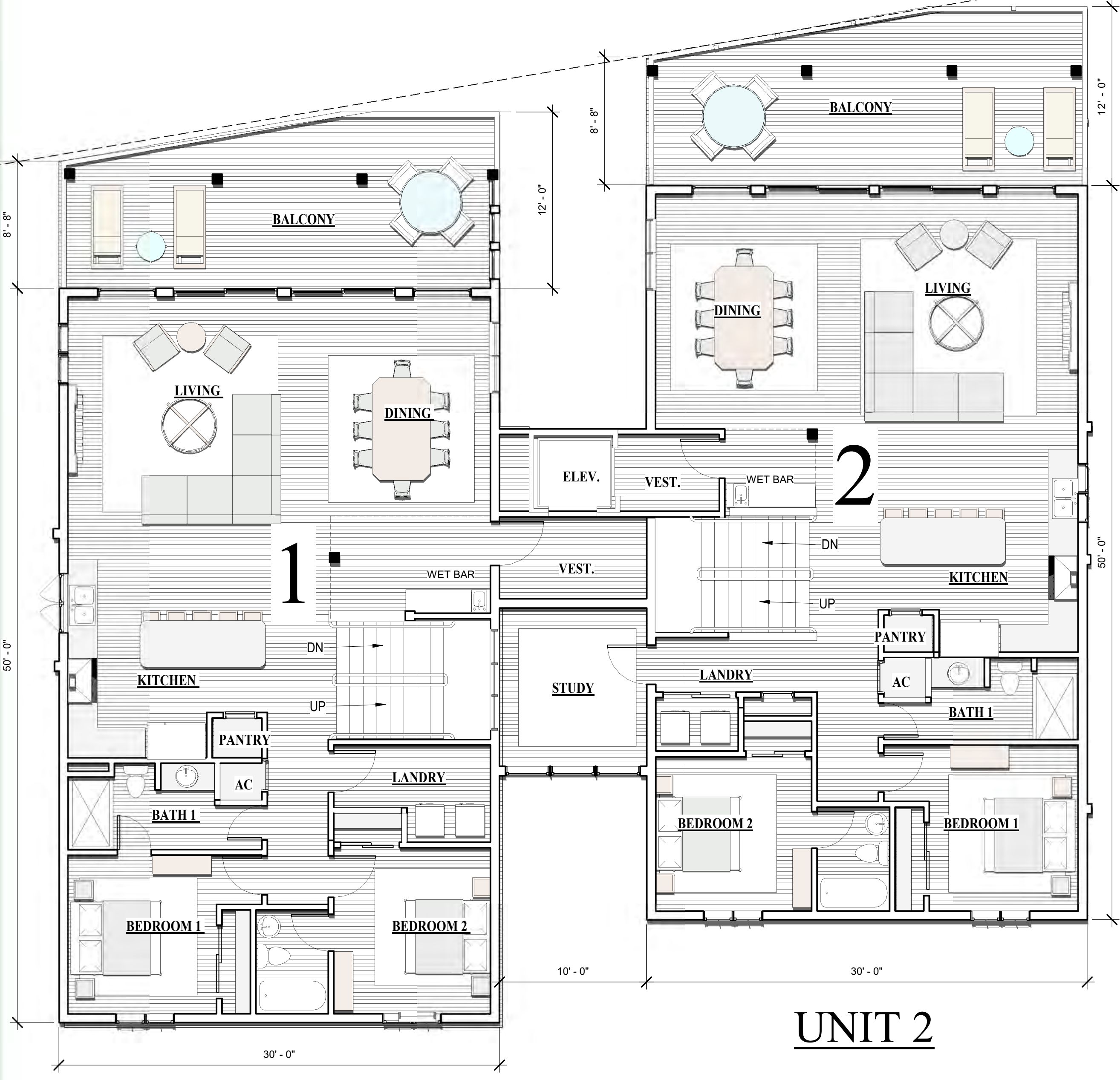
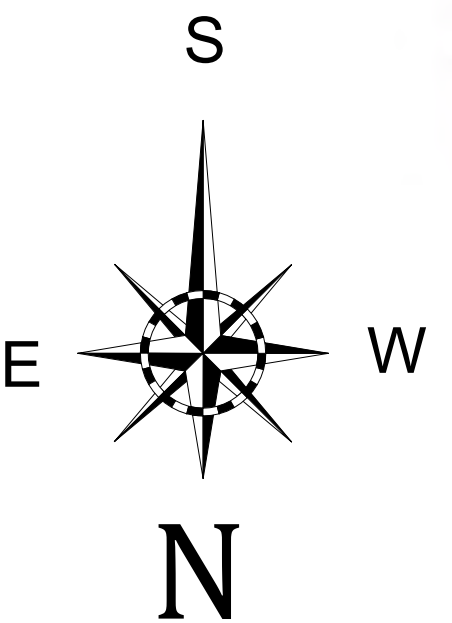


**1ST LEVEL FLOOR PLAN  
BLDG. A**



**2ND LEVEL BLDG. A PLAN  
BLDG. A**



HENRY NORRIS  
&  
ASSOCIATES

ARCHITECTURE  
&  
ENVIRONMENTAL  
DESIGN

30 N. PALAFOX  
PENSACOLA, FL  
32502  
(850)432-6011  
FAX 435-9001

*Krystal Key Beach*  
PERDIDO KEY DRIVE,  
ESCAMBIA CO. FL.

JOB #:  
CADAuthor  
CHECKED: HN  
DATE: 11/07/22

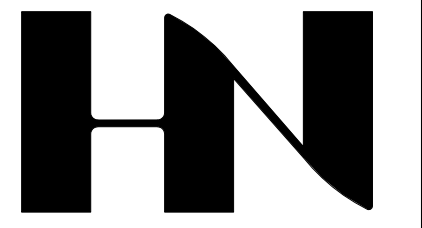
REVISIONS:

SEAL:

SHEET TITLE:  
BLDG. A 1st & 2nd Levels  
PLAN

**A-1**





HENRY NORRIS & ASSOCIATES

ARCHITECTURE & ENVIRONMENTAL DESIGN

30 N. PALAFOX  
PENSACOLA, FL  
32502  
(850)432-6011  
FAX 435-9001

*Krystal Key Beach*  
PERDIDO KEY DRIVE,  
ESCAMBIA CO. FL.

JOB #:  
CAD Author  
CHECKER  
DATE: 11/07/22

REVISIONS:

SEAL:

SHEET TITLE:  
BLDG. A 3rd Level PLAN

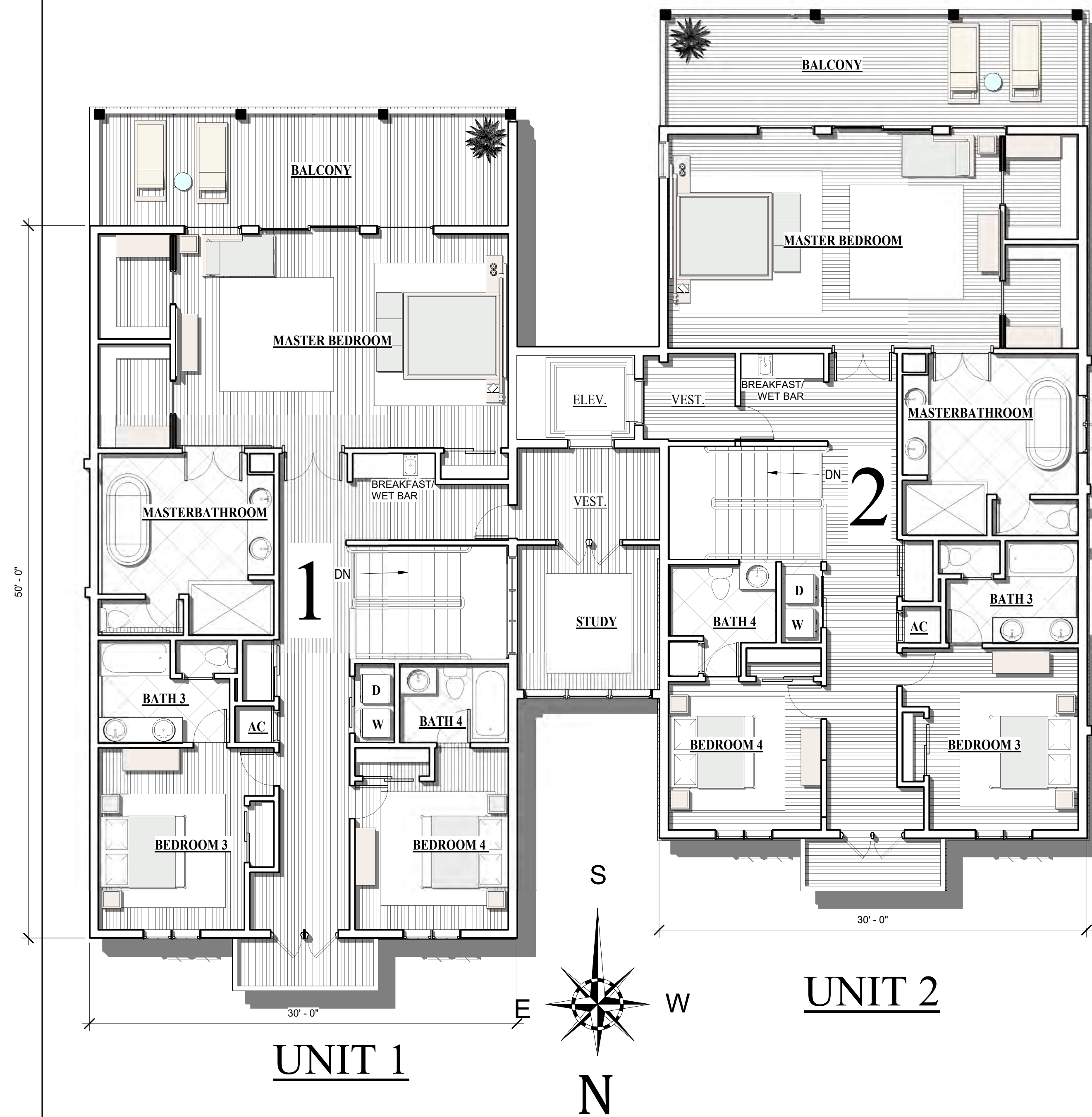
**A-2**



UNIT 1    BLDG. A    UNIT 2  
NORTH ELEVATION



BLDG. A  
WEST ELEVATION



3RD LEVEL BLDG. A PLAN





HENRY NORRIS  
&  
ASSOCIATES

ARCHITECTURE  
&  
ENVIRONMENTAL  
DESIGN

30 N. PALAFOX  
PENSACOLA, FL  
32502  
(850)432-6011  
FAX 435-9001

*Krystal Key Beach*  
PERDIDO KEY DRIVE,  
ESCAMBIA CO. FL.

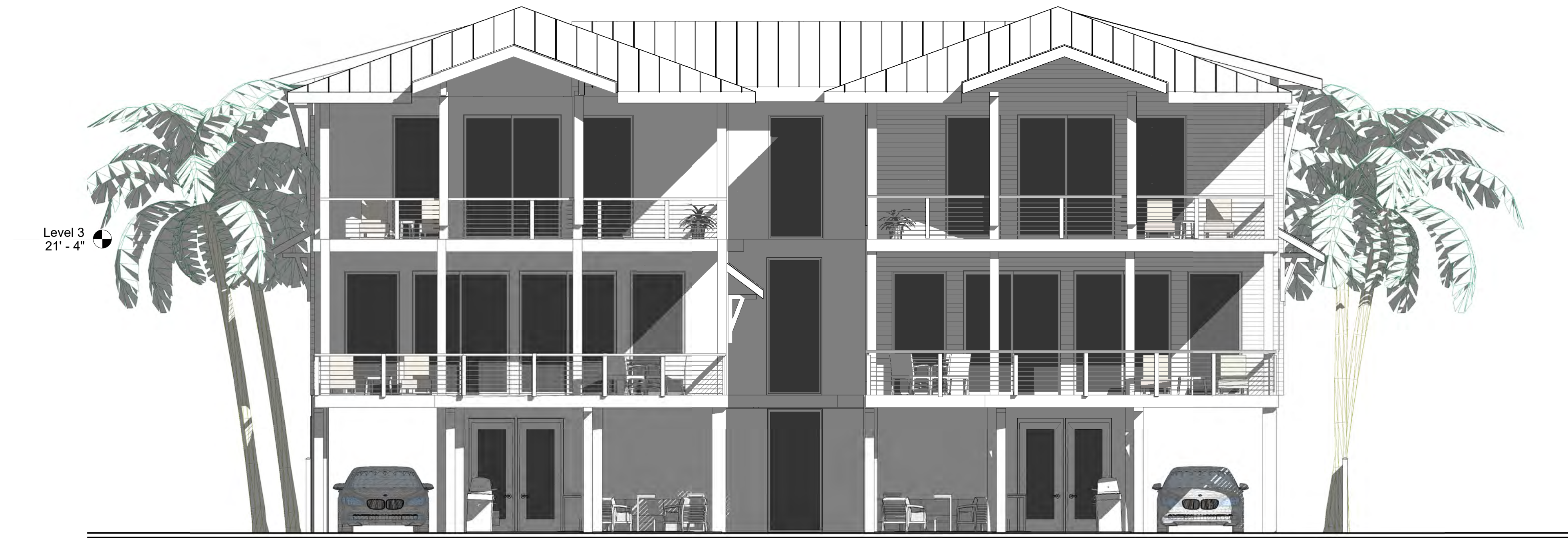
JOB #:  
CAD Author  
CHECKED: HN  
DATE: 11/07/22

REVISIONS:

SEAL:

SHEET TITLE:  
BLDG. A Elevations

**A-3**



UNIT 2

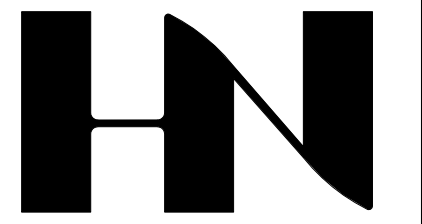
UNIT 1

SOUTH ELEV. BLDG. A



EAST ELEV. BLDG. A





HENRY NORRIS & ASSOCIATES

ARCHITECTURE & ENVIRONMENTAL DESIGN

30 N. PALAFOX  
PENSACOLA, FL  
32502  
(850)432-6011  
FAX 435-9001

*Krystal Key Beach*  
PERDIDO KEY DRIVE,  
ESCAMBIA CO. FL.

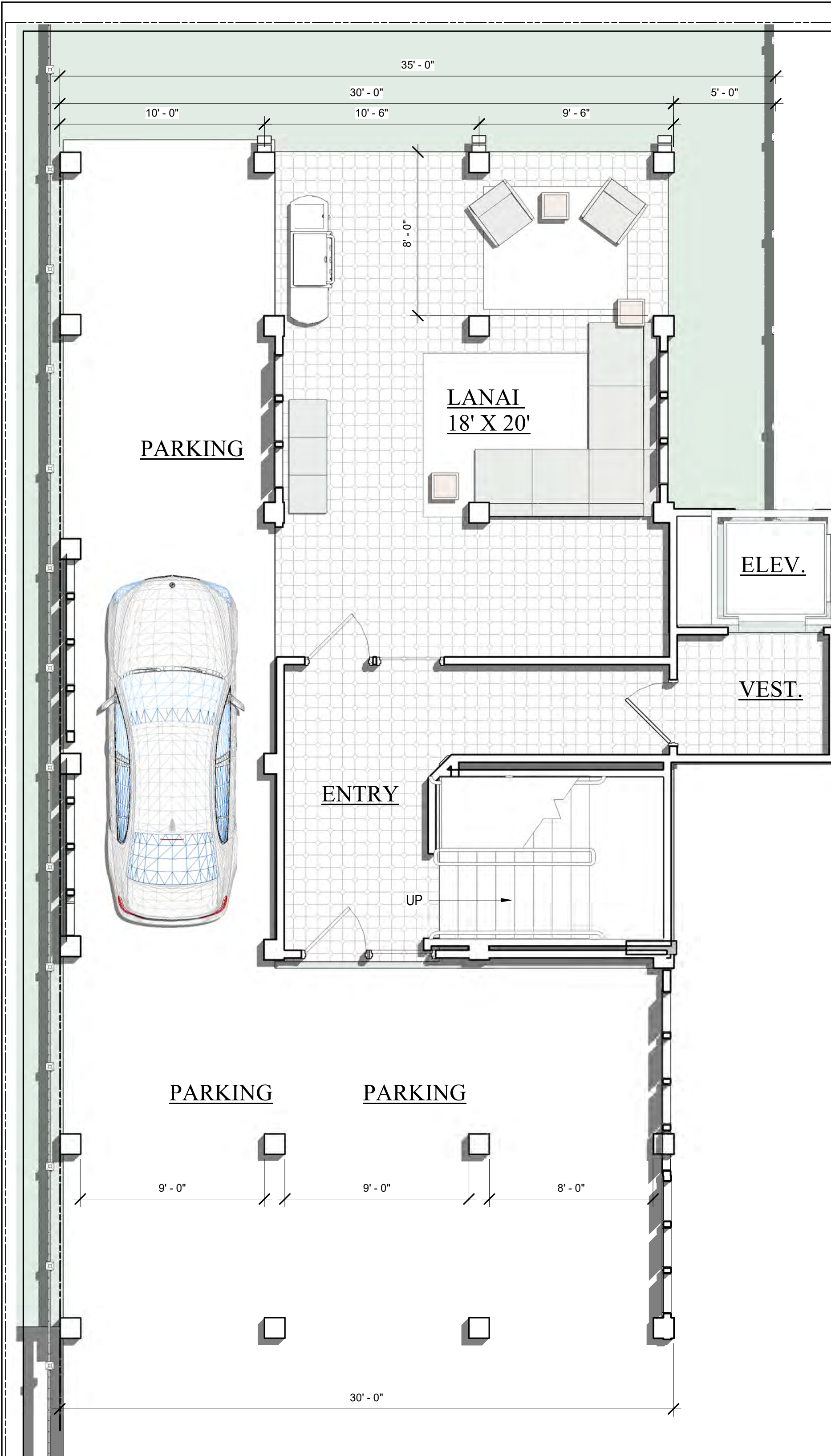
JOB #:  
CAD/Author  
CHECKED: HN  
DATE: 11/07/22

REVISIONS:

SEAL:

SHEET TITLE:  
UNIT 1 FLOOR PLANS

**A-4**



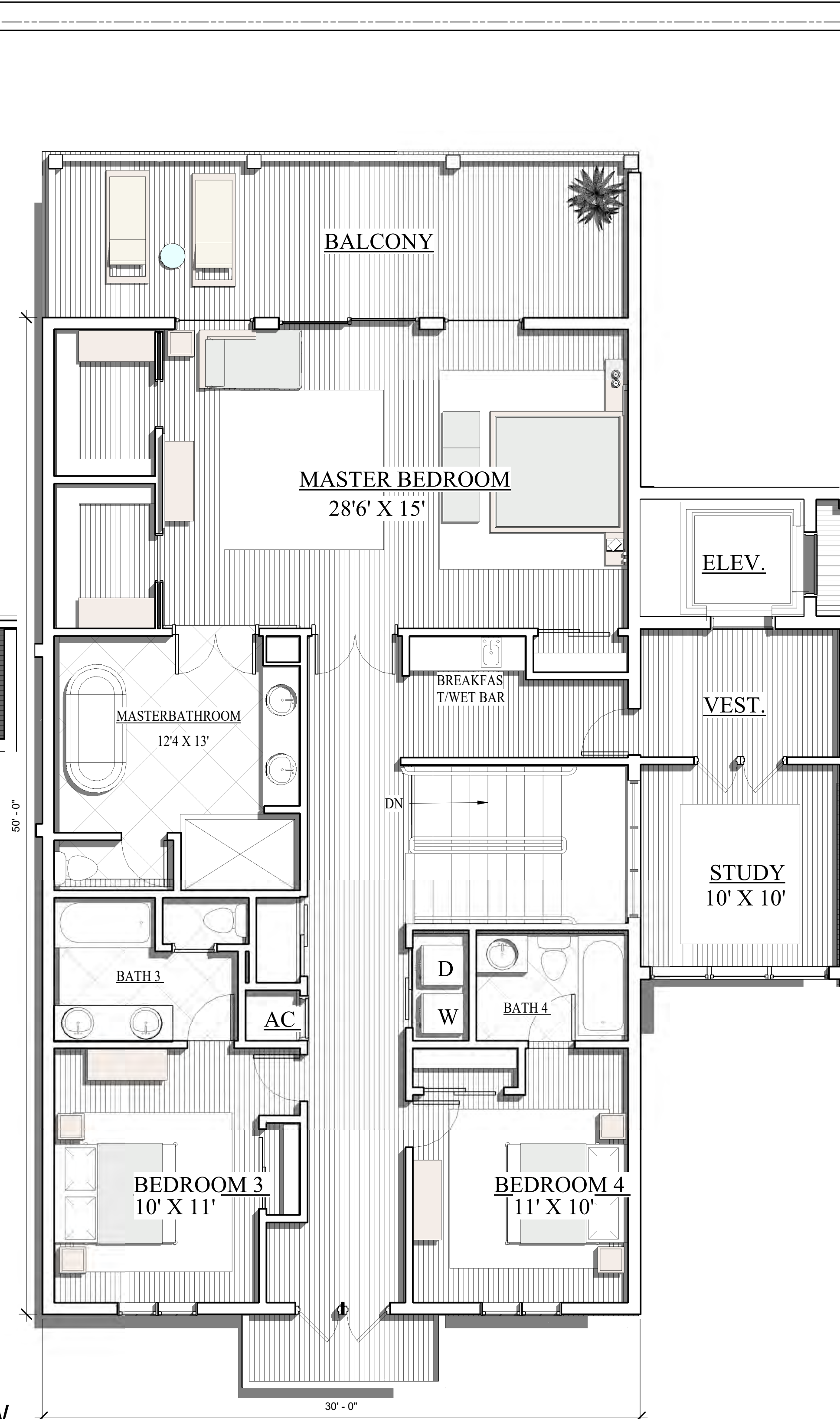
**UNIT 1  
1ST LEVEL FLOOR PLAN**

ENTRY/VEST. 185 SF  
LANAI 350 SF



**UNIT 1  
2ND LEVEL FLOOR PLAN**

2ND LEVEL 1525 SF  
BALCONY 332 SF

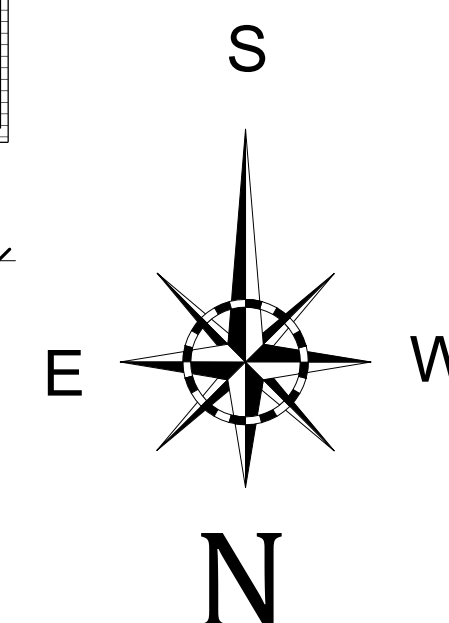


**UNIT 1  
3RD LEVEL FLOOR PLAN**

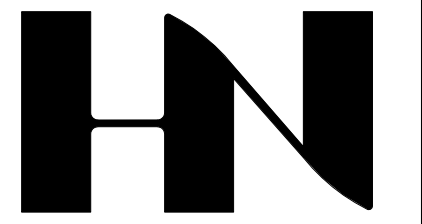
3RD LEVEL 1640 SF  
BALCONIES 300 SF

**TOTAL 3165 H/C SF**

\* SQUARE FOOTAGE TOTAL INCLUDES EXTERIOR WALLS BUT NOT COMMON SHARED WALLS. THE TOTAL DOES NOT INCLUDE THE LANAI, ENTRY, OR LOWER LEVEL SPACES. THE ELEVATORS ARE NOT INCLUDED. THE STAIRWAY IS ONLY COUNTED ONCE.







HENRY NORRIS & ASSOCIATES

ARCHITECTURE & ENVIRONMENTAL DESIGN

30 N. PALAFOX  
PENSACOLA, FL  
32502  
(850)432-6011  
FAX 435-9001

*Krystal Key Beach*  
PERDIDO KEY DRIVE,  
ESCAMBIA CO. FL.

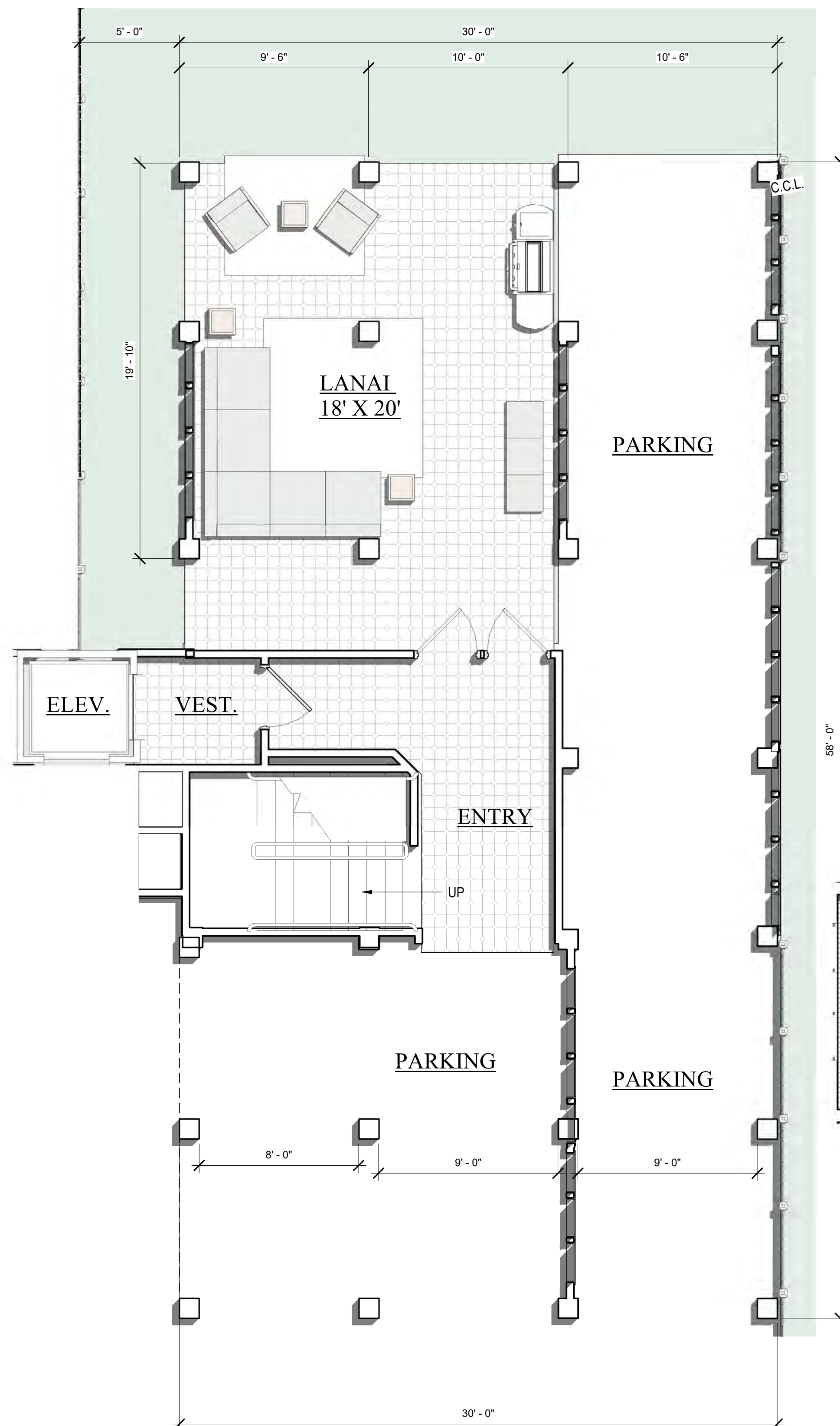
JOB #:  
CAD/Author  
CHECKED: HN  
DATE: 11/07/22

REVISIONS:

SEAL:

SHEET TITLE:  
UNIT 2 FLOOR PLANS

**A-5**



**UNIT 2**  
**1ST LEVEL FLOOR PLAN**

ENTRY/VEST. 185 SF  
LANAI 350 SF



**UNIT 2**  
**2ND LEVEL FLOOR PLAN**

2ND LEVEL 1590 SF  
BALCONY 332 SF

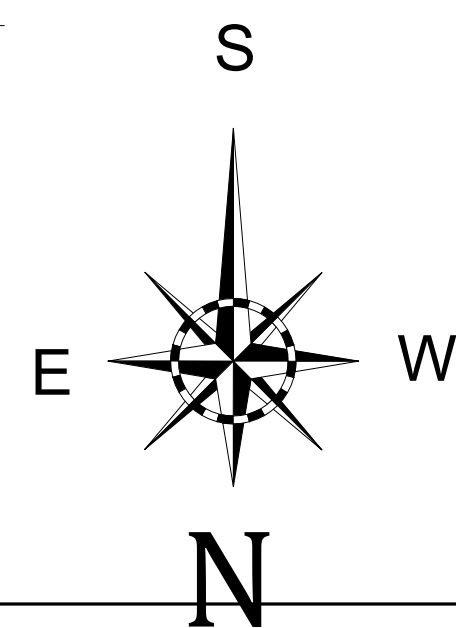
\* SQUARE FOOTAGE TOTAL INCLUDES EXTERIOR WALLS BUT NOT COMMON SHARED WALLS. THE TOTAL DOES NOT INCLUDE THE LANAI, ENTRY, OR LOWER LEVEL SPACES. THE ELEVATORS ARE NOT INCLUDED. THE STAIRWAY IS ONLY COUNTED ONCE.



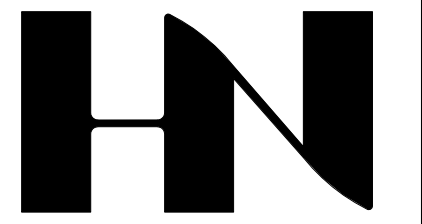
**UNIT 2**  
**3RD LEVEL FLOOR PLAN**

3RD LEVEL 1470 SF  
BALCONIES 300 SF

**TOTAL 3060 H/C SF**







HENRY NORRIS & ASSOCIATES

ARCHITECTURE & ENVIRONMENTAL DESIGN

30 N. PALAFOX  
PENSACOLA, FL  
32502  
(850)432-6011  
FAX 435-9001

*Krystal Key Beach*  
PERDIDO KEY DRIVE,  
ESCAMBIA CO. FL.

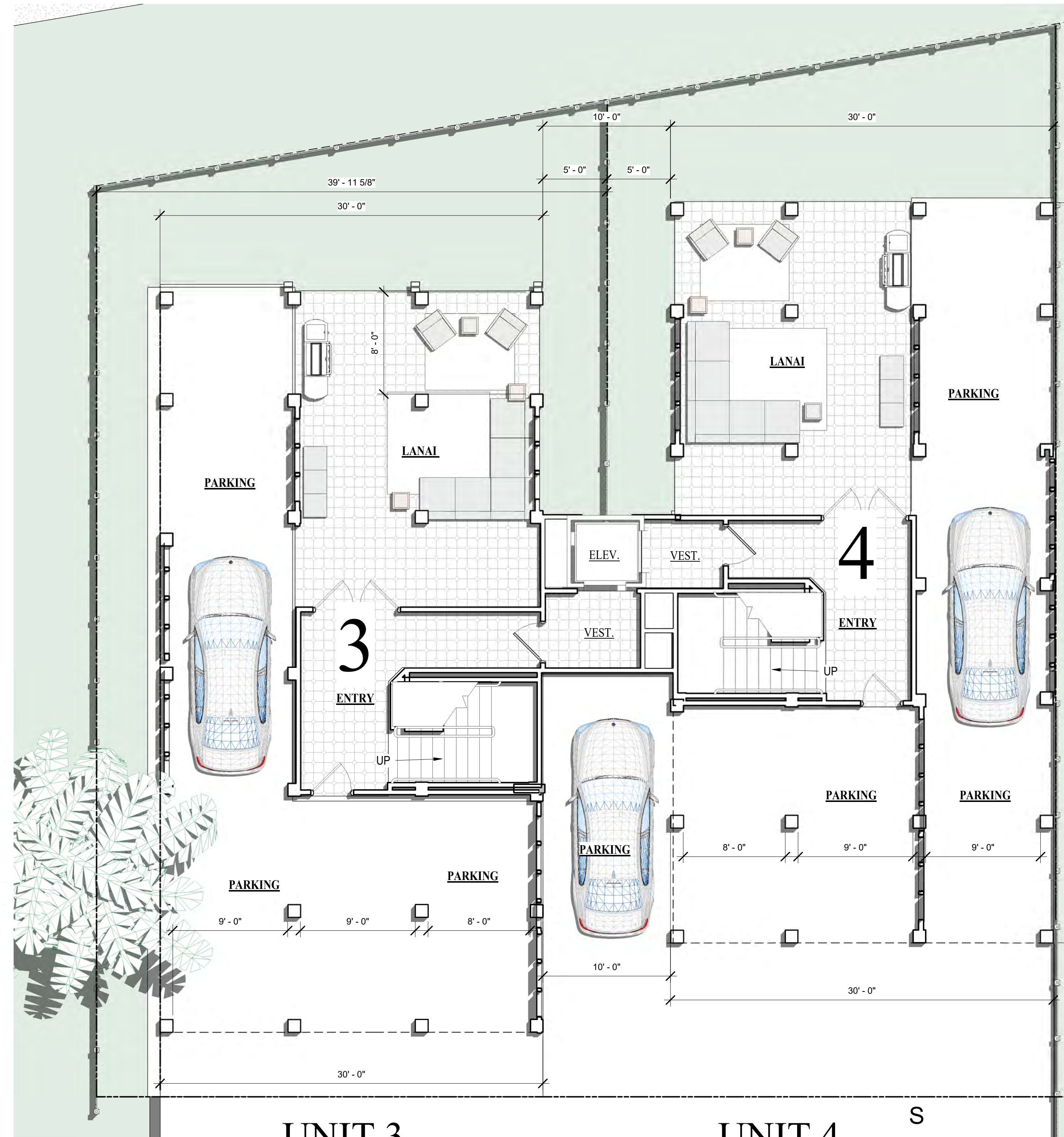
JOB #:  
CAD Author  
CHECKED: HN  
DATE: 11/07/22

REVISIONS:

SEAL:

SHEET TITLE:  
BLDG B 1ST & 2ND LEVEL  
PLANS

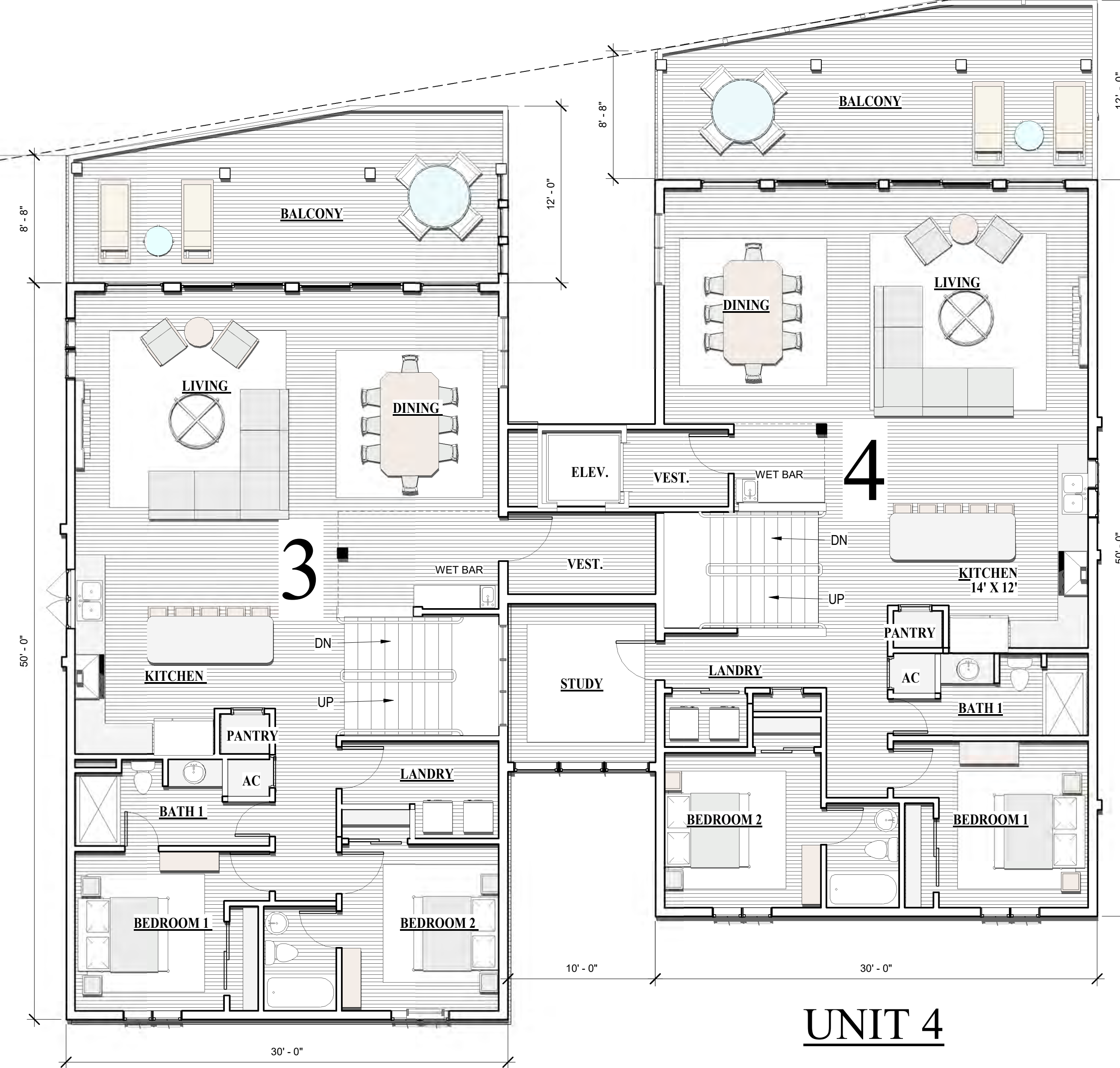
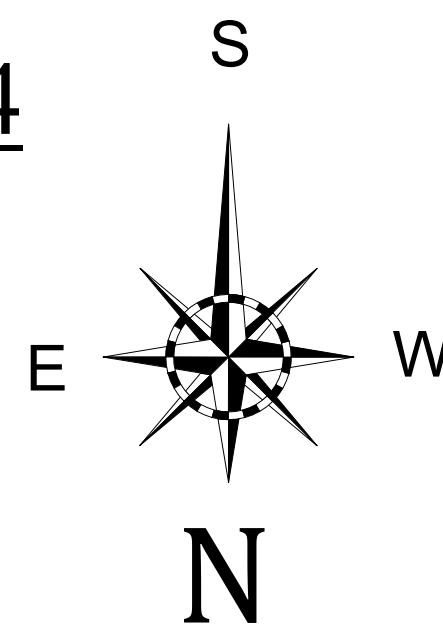
**B-1**



UNIT 3

UNIT 4

1ST LEVEL PLAN  
BLDG B



UNIT 3

UNIT 4

2ND LEVEL PLAN  
BLDG. B





HENRY NORRIS & ASSOCIATES

ARCHITECTURE & ENVIRONMENTAL DESIGN

30 N. PALAFOX  
PENSACOLA, FL  
32502  
(850)432-6011  
FAX 435-9001

*Krystal Key Beach*  
PERDIDO KEY DRIVE,  
ESCAMBIA CO. FL.

JOB #:  
CAD/Author  
CHECKED: HN  
DATE: 11/07/22

REVISIONS:

SEAL:

SHEET TITLE:  
BLDG. B PLANS

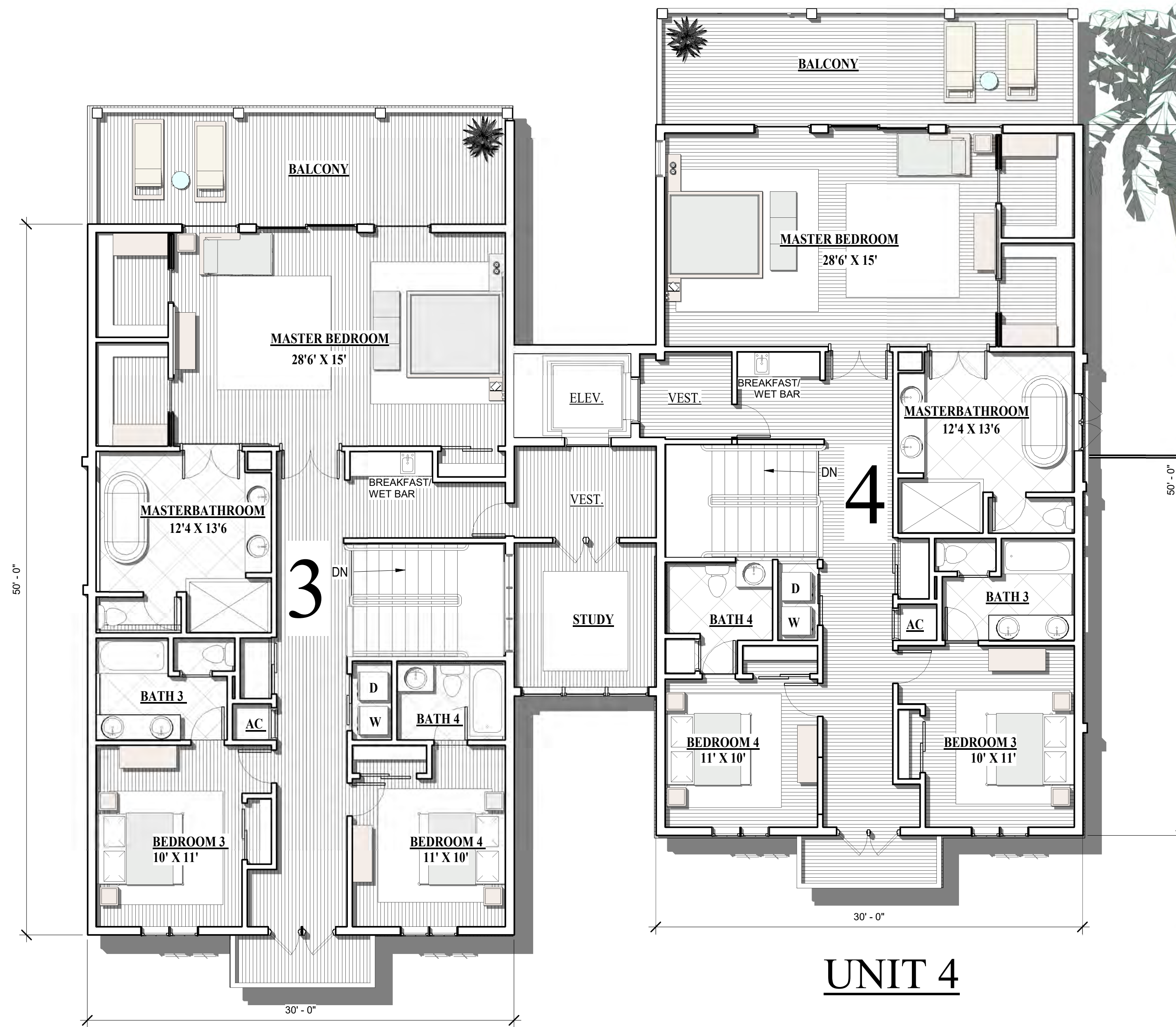
**B-2**



UNIT 3     BLDG. B     UNIT 4  
NORTH ELEVATION



BLDG. B  
WEST ELEVATION



UNIT 3  
UNIT 4  
3RD LEVEL BLDG. B PLAN





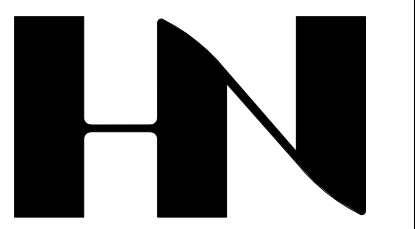
UNIT 4

UNIT 3

SOUTH ELEV. BLDG. B



EAST ELEV. BLDG. B



HENRY NORRIS  
&  
ASSOCIATES

ARCHITECTURE  
&  
ENVIRONMENTAL  
DESIGN

30 N. PALAFOX  
PENSACOLA, FL  
32502  
(850)432-6011  
FAX 435-9001

*Krystal Key Beach*  
PERDIDO KEY DRIVE,  
ESCAMBIA CO. FL.

JOB #:  
CAD Author  
CHECKED: HN  
DATE: 11/07/22

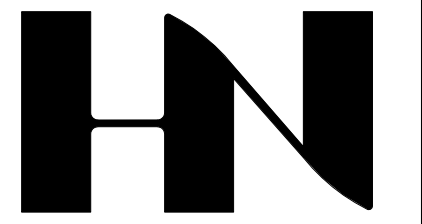
REVISIONS:

SEAL:

SHEET TITLE:  
BLDG. B 3RD LEVEL &  
ELEV.

**B-3**





HENRY NORRIS & ASSOCIATES

ARCHITECTURE & ENVIRONMENTAL DESIGN

30 N. PALAFOX  
PENSACOLA, FL  
32502  
(850)432-6011  
FAX 435-9001

*Krystal Key Beach*  
PERDIDO KEY DRIVE,  
ESCAMBIA CO. FL.

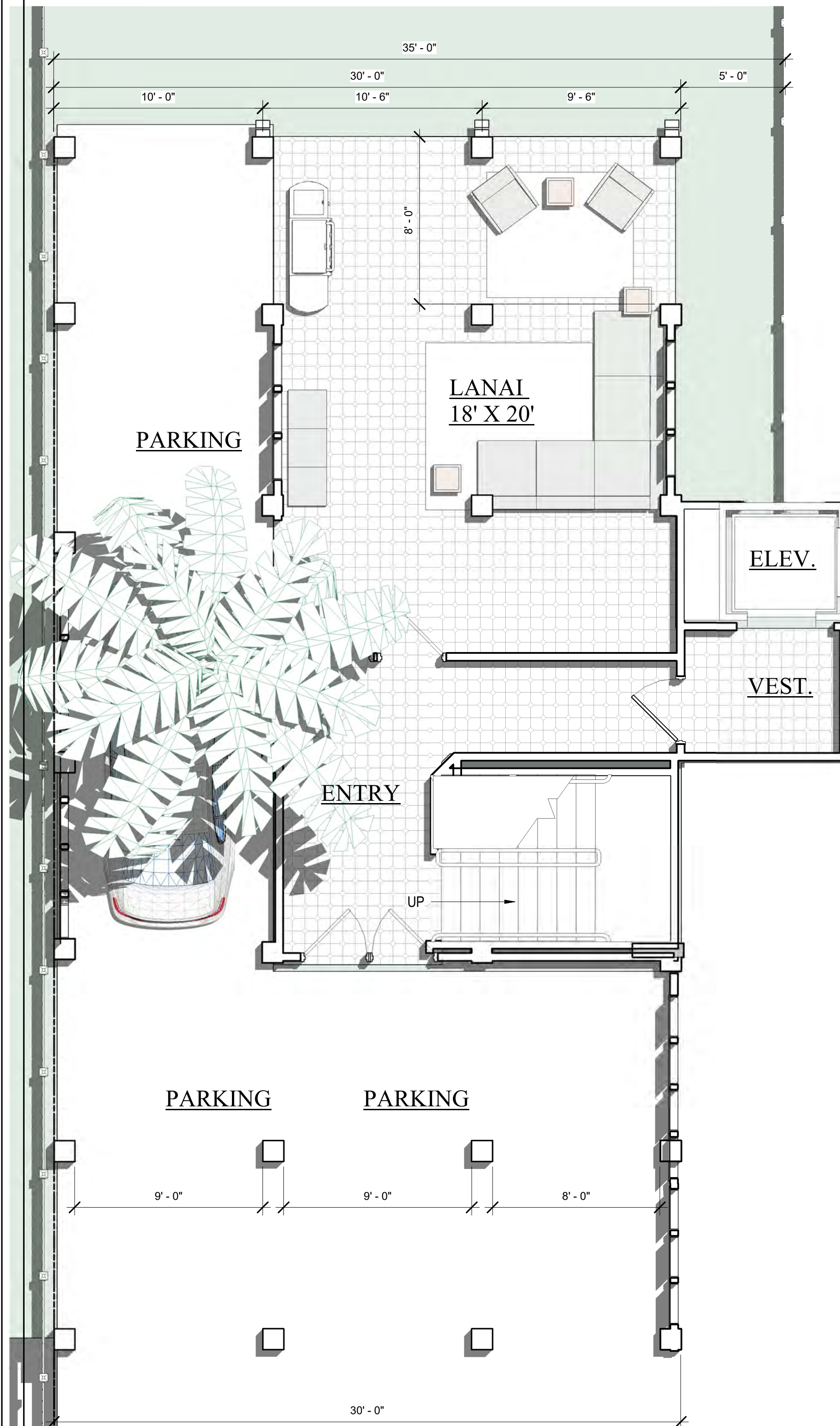
JOB #:  
CAD/Author  
CHECKED: HN  
DATE: 11/07/22

REVISIONS:

SEAL:

SHEET TITLE:  
UNIT 3 FLOOR PLANS

**B-4**



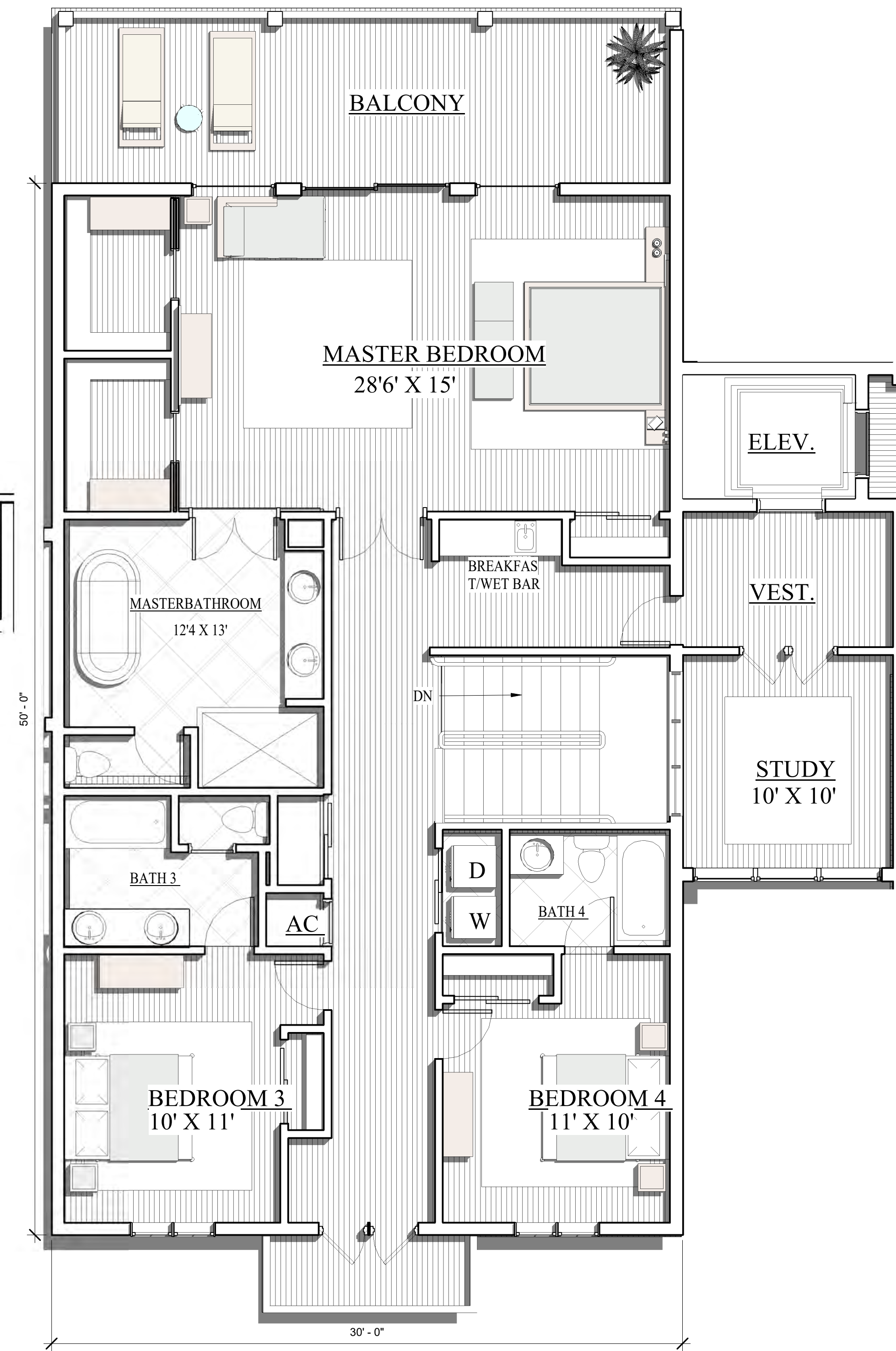
**UNIT 3  
1ST LEVEL FLOOR PLAN**

ENTRY/VEST. 185 SF  
LANAI 350 SF



**UNIT 3  
2ND LEVEL FLOOR PLAN**

2ND LEVEL 1525 SF  
BALCONY 332 SF

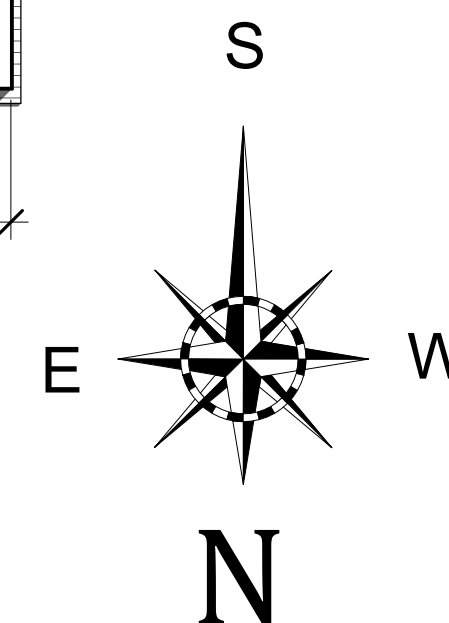


**UNIT 31  
3RD LEVEL FLOOR PLAN**

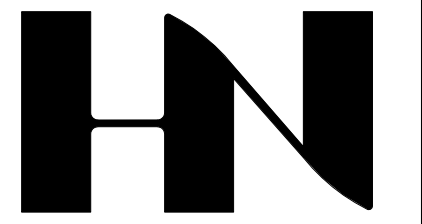
3RD LEVEL 1640 SF  
BALCONIES 300 SF

**TOTAL 3165 H/C SF**

\* SQUARE FOOTAGE TOTAL INCLUDES EXTERIOR WALLS BUT NOT COMMON SHARED WALLS. THE TOTAL DOES NOT INCLUDE THE LANAI, ENTRY, OR LOWER LEVEL SPACES. THE ELEVATORS ARE NOT INCLUDED. THE STAIRWAY IS ONLY COUNTED ONCE.







HENRY NORRIS & ASSOCIATES

ARCHITECTURE & ENVIRONMENTAL DESIGN

30 N. PALAFOX  
PENSACOLA, FL  
32502  
(850)432-6011  
FAX 435-9001

*Krystal Key Beach*  
PERDIDO KEY DRIVE,  
ESCAMBIA CO. FL.

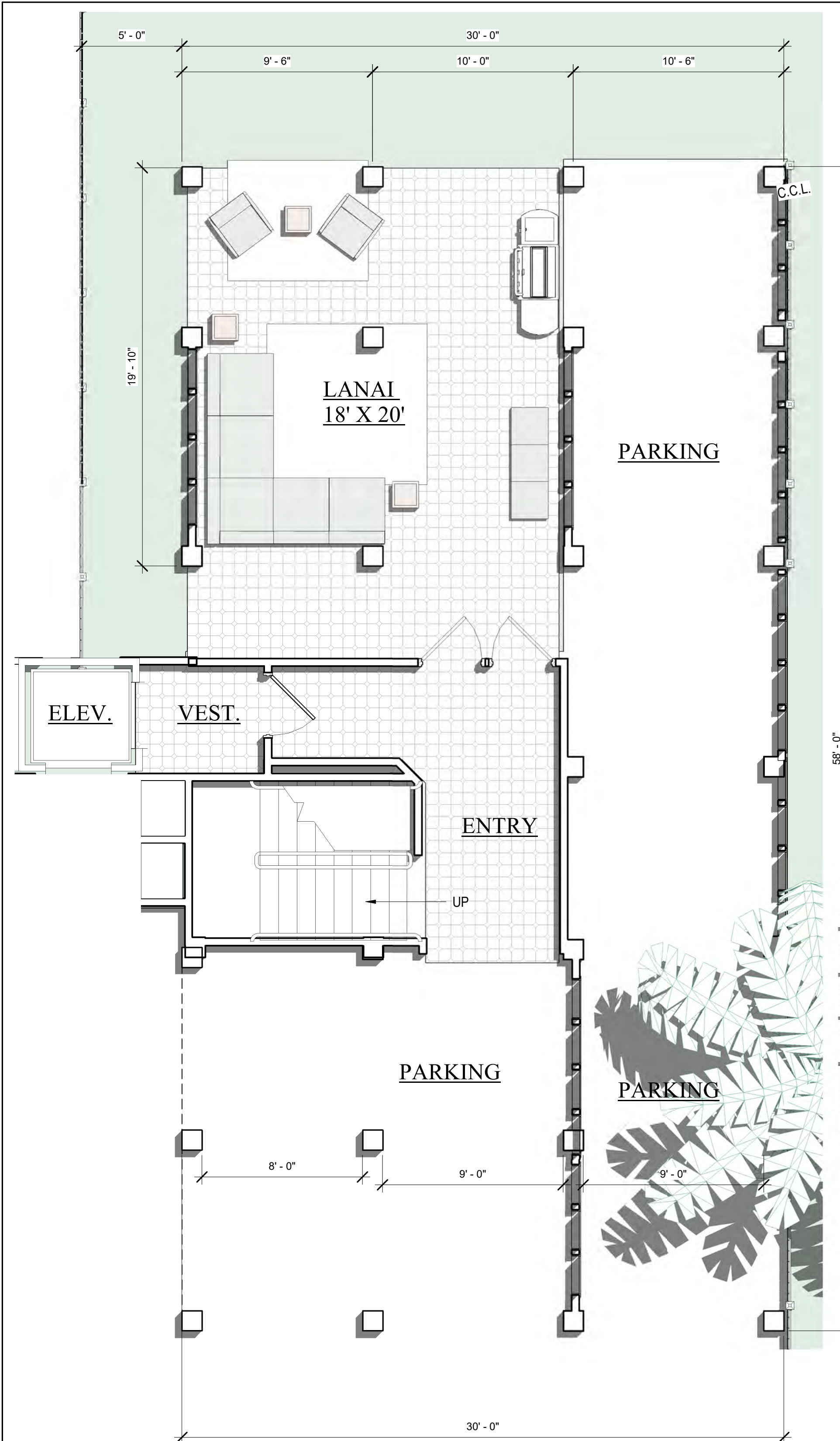
JOB #:  
CAD Author  
CHECKED: HN  
DATE: 11/07/22

REVISIONS:

SEAL:

SHEET TITLE:  
UNIT 4 FLOOR PLANS

**B-5**



**UNIT 4**  
**1ST LEVEL FLOOR PLAN**

ENTRY/VEST. 185 SF  
LANAI 350 SF



**UNIT 4**  
**2ND LEVEL FLOOR PLAN**

2ND LEVEL 1590 SF  
BALCONY 332 SF

\* SQUARE FOOTAGE TOTAL INCLUDES EXTERIOR WALLS BUT NOT COMMON SHARED WALLS. THE TOTAL DOES NOT INCLUDE THE LANAI, ENTRY, OR LOWER LEVEL SPACES. THE ELEVATORS ARE NOT INCLUDED. THE STAIRWAY IS ONLY COUNTED ONCE.

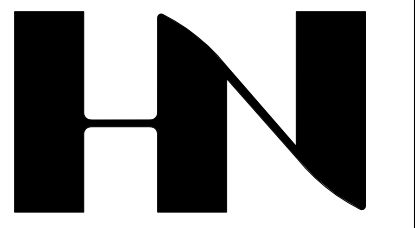


**UNIT 4**  
**3RD LEVEL FLOOR PLAN**

3RD LEVEL 1470 SF  
BALCONIES 300 SF

**TOTAL 3060 H/C SF**





HENRY NORRIS  
&  
ASSOCIATES

ARCHITECTURE  
&  
ENVIRONMENTAL  
DESIGN

30 N. PALAFOX  
PENSACOLA, FL  
32502  
(850)432-6011  
FAX 435-9001

*Krystal Key Beach*  
PERDIDO KEY DRIVE,  
ESCAMBIA CO. FL.

JOB #:  
CAD Author  
CHECKED: HN  
DATE: 11/07/22

REVISIONS:

SEAL:

SHEET TITLE:  
Unnamed

**AB-2**



BEACH UNITS FROM THE BEACH